

AXXAIR's orbital facing

AXXAIR
INNOVATIVE ORBITAL SOLUTIONS

Tube facing is used on thin tubes with a thickness of less than 3 mm. It consists in bringing into conformity the end of a tube or an accessory.

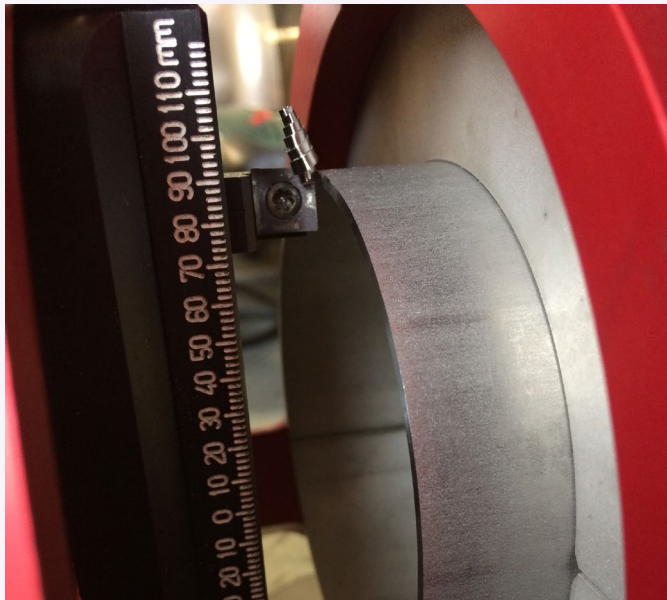
This conformity acts on three aspects:

the perpendicularity of the face of the tube -
the surface state of the face - potentially a length adjustment.

After the facing process, the face will be perpendicular to the axis of the tube, without burrs, with a low RA and the desired length.

Facing machines are used when the cutting process is not sufficiently precise for the application or when the cutting process generates burrs.

To give an exemple: abrasive cutting disc, band saw or tube cutter.



Tube with small diameters <math><25.4\text{ mm}</math> are particularly concerned by the facing process. They are often cut with tube cutters or abrasive cutting machines. Generally speaking, tube must be faced before welding in order to obtain quality welds.

One category of tube is particularly concerned: electropolished tube used in semiconductor or pharmaceutical industries.

It is forbidden to scratch the polished surface inside the tubes: the cuts are therefore only done with a cutting wheel. This process does not generate chips but only dust. The result of this cut is not exploitable without a facing operation which unrolls the chip towards the outside of the tube.

FLEXIBILITY, PRODUCTIVITY

Our facing machines operate on battery or corded for more flexibility. HSS TIALN blades, reversible with two cutting edges guarantee optimal lifetime of consumables.

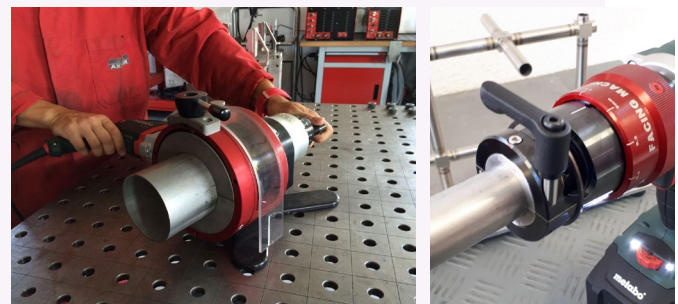
QUALITY

Facing creates a clean and burr-free surface without tube deformation: sharpness and accuracy guaranteed.

Thin tube are therefore ready for welding.

PORTABILITY

Our facing machines are lightweight and designed to be used on site as well as in the workshop.



Please do not hesitate to contact us for all enquiries relating to orbital facing technology.

We will be glad to share our know-how with you and find an adapted solution to your needs!





NEW PRODUCTS

in the orbital facing range DC25&DC65

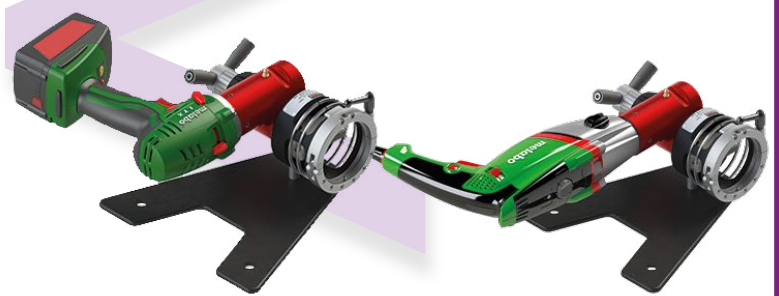


Customer satisfaction and our continuous improvement policy have led our developers to redesign part of our facing range.



The goal is to provide more robustness and improved ergonomics of the clamping system.

The **stability of the assembly** has been greatly improved by bringing the center of gravity of the engine closer to the rest of the machine.



Robustness and performance

New Brushless motor 18V

Special handy design



Easy handling



Leightweight

Stability and ergonomics

Center of gravity brought closer



Improved engine attachment system



Easy set up of the tube

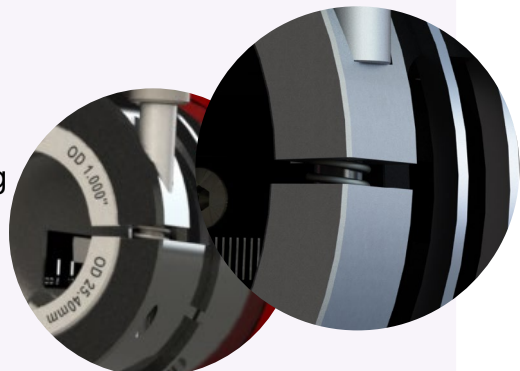
Indexable wrist



Molded jaws
(facilitate the installation of the tube)

New tightening handle

with spring



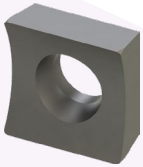
NEW

DC25 MA - DC65 MA

AXXAIR
INNOVATIVE ORBITAL SOLUTIONS

High quality blades

HSS TIALN blade
Reversible,
two cutting edges



Easy adjustment

Indexable wrist

Clamping shells

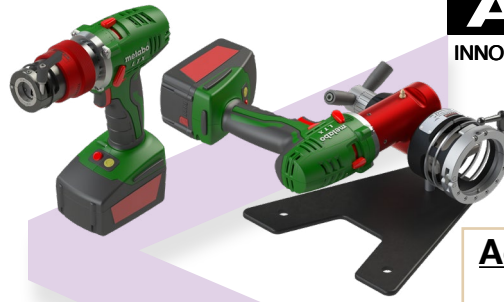
Stainless steel jaws
WITH SPRING

Wide opening for
easy positioning
of tube



New Brushless motor 18V

- High rotation torque
- 2 mechanical speeds + electric speed variator
- Special handy design
- Work without return shock
- Integrated work lamp
- Rugged reduction housing which allows heat dissipation and optimal durability
- Comes with two 5.2 AH battery, LiHD technology, maximum autonomy



Accurate manual advance

Graduated vernier scale



Delivered in an anti-shock case

Water- and dustproof



Facing range	
DC25-MA	ø3 - ø25.4 mm 0.1 - 1"
DC65-MA	ø3 - ø63.5 mm 0.1 - 2.5"



NEW

DC25 MA - DC65 MA**AXXAIR**
INNOVATIVE ORBITAL SOLUTIONS**Technical characteristics:****Thickness < 3 mm (0,12") according to material**

Burr-free tube squaring and edge breaking machine used after a band saw cut or on electropolished tubes. Ideal tool to face a band saw cut before automatic welding

18 V Drill / Driver motor:

- 220-240 V ~ 50 / 60Hz or 100-120V ~ 60Hz

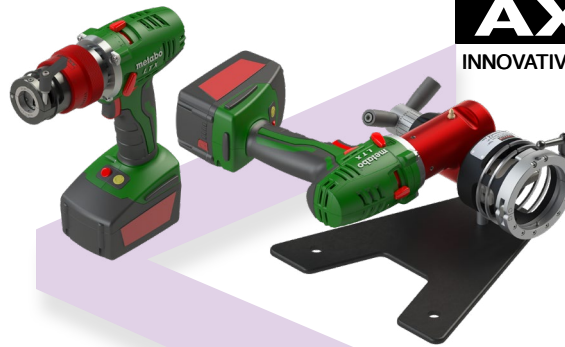
- Come with two 18V Li-Power, 5.2 Ah batteries and a fast battery charger

- 2 mechanical speeds + electric speed variator :

Speed 1 : 0-500 tr/min (rpm)

Speed 2 : 0-1700 tr/min (rpm)

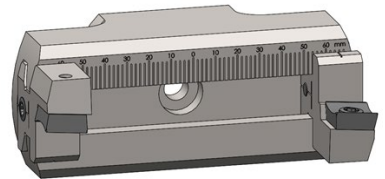
All motors are supplied in their own individual cases, including the necessary tools

**DC25**

There are two mounting positions for the blade to cover the range of diameter.

**DC65**

Adjustment of the tool support by sliding: allows easy adjustment according to diameter and optimization of tool wear.



- 30° and 45° outside bevel possible with optional tool holder
- Facing and bevelling in one operation
- Possibility to use two tools simultaneously

	Product Code	Facing machine for the following diameters (in mm)	Net weight	Minimal straight length of tube	Customs Code	Dimensions (HxLxI in mm)
120 V Drill / Driver	DC25-MA1	Ø3 - Ø25.4 0.1 - 1"	2.5 kg	With standard jaws : 9mm (0,354") With micro-fit jaws : 5mm (0,196")	8461900000	285 x 220 x 75
	DC65-MA1	Ø3 - Ø63.5 0.1 - 2.5"	5.5 kg	With standard jaws : 10mm (0,393")		140 x 325 x 250
230 V Drill / Driver	DC25-MA2	Ø3 - Ø25.4 0.1 - 1"	2.5 kg	With standard jaws : 9mm (0,354") With micro-fit jaws : 5mm (0,196")		285 x 220 x 75
	DC65-MA2	Ø3 - Ø63.5 0.1 - 2.5"	5.5 kg	With standard jaws : 10mm (0,393")		140 x 325 x 250

**Join experience**